
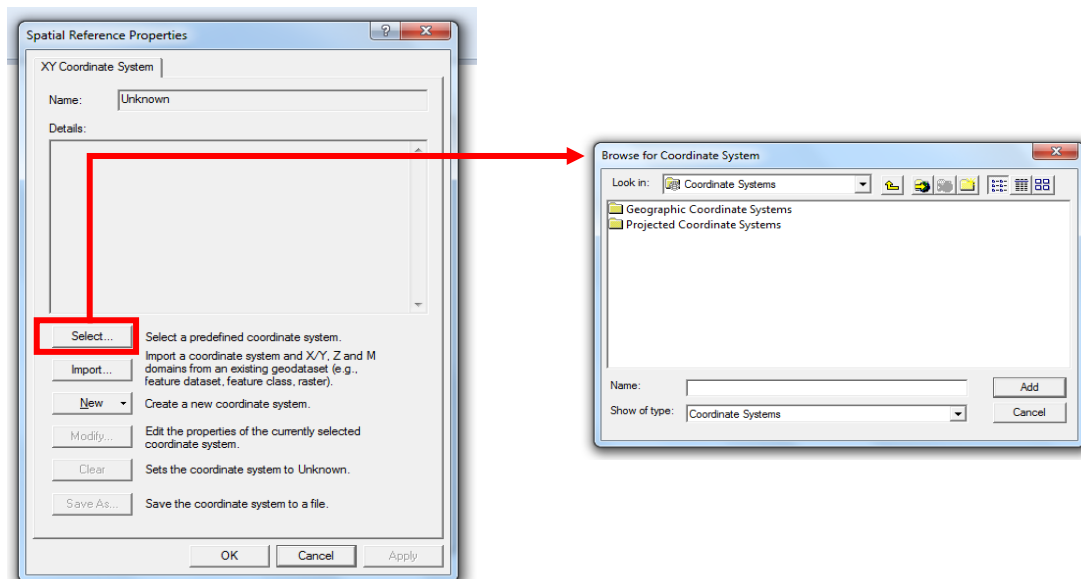
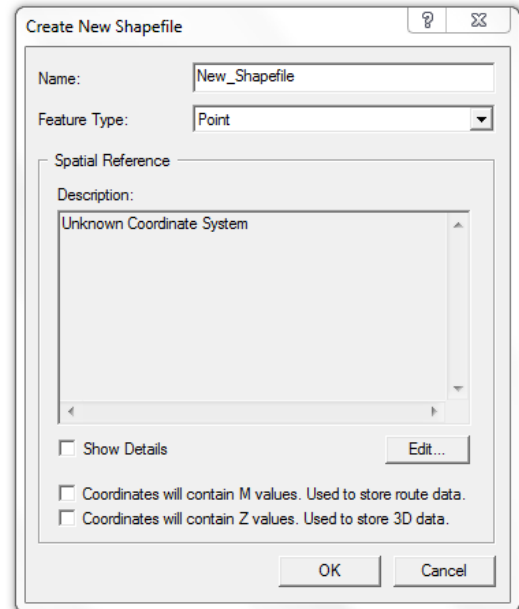


Exercise # 3 – Creating Shapefiles

Creating a new shapefile

1. Run ArcCatalog 
2. Select the folder where you want to save your work and view the contents in the window on the right.
3. Right click in the Catalog display (or you can do it from the **File** menu) > **New** > **Shapefile**
4. In the name field type **Tehsils**.
5. From the feature type dropdown, select **Polygon**.
6. To select the coordinate system, click **edit** > click the **select** option from the window opened > then go to **Geographic CS** > **world** > **WGS1984**
7. Click **OK** > **OK**.



The new shapefile appears in the project folder.

8. Follow steps 3-7 to create a shapefile each for **point** and **polyline** feature types, giving names **settlements** and **rivers** respectively.
9. Now in the **ArcMap** window add these shapefiles by click the **add** button.
10. Save your project.

So that would be the end of our first day, we will take start from here, tomorrow. Hope you find these exercises helpful.

Please let me know if you have any queries or suggestions.

ENJOY!!

NCE in Geology,
University of Peshawar